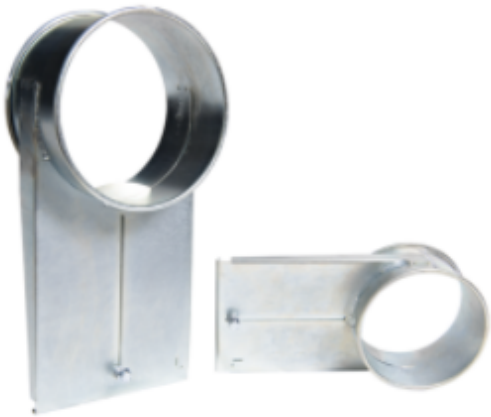


MANUAL AND PNEUMATIC SHUTTER VALVES LH

Manual shutters LH[®], in manual or pneumatic version, suitable for the closing/opening of a material drain.

Available in the diameters 100 – 160 – 210 – 270.

Realized in painted steel and stainless steel AISI 304.



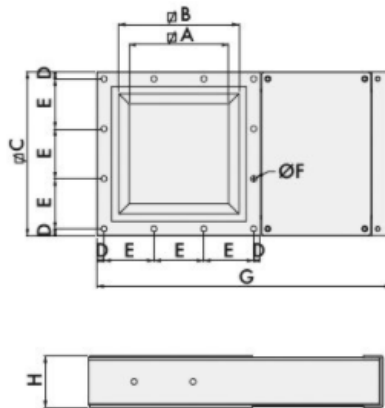
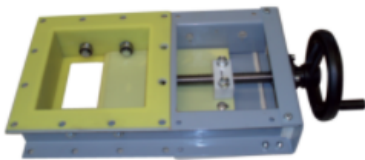
| ØA | H |
|-----|-----|
| 400 | 250 |
| 620 | 380 |

BLADE VALVES LH IN ALUMINUM

Blade valves LH[®], in pneumatic or electro-pneumatic version, suitable for the closing/opening of a material drain.

Available in the diameters 100 – 150 – 200 – 250 – 300.

Realized in aluminum.



| TIPO | G | H |
|---------|-----|-----|
| SLY 150 | 455 | 113 |
| SLY 200 | 555 | 113 |
| SLY 250 | 650 | 113 |
| SLY 300 | 765 | 113 |